



An Art Education Program of the
Bucks County Intermediate Unit
705 N. Shady Retreat Rd.
Doylestown PA 18901
215-348-2940

Art on the Move

Collection Descriptions

[Collection A](#)

[Collection B](#)

[Collection C](#)

[Collection D](#)

[Collection E](#)

[Collection F](#)

[Collection G](#)

[Collection H](#)

[Collection I](#)

[Collection J](#)

[Collection K](#)



Collection A



Ranstead Street, n.d., Walter Emerson Baum (H. 24" x W. 30")



Bus Station, n.d., Joseph Crilley (H. 24" x W. 30")



The Sportsman, n.d. Joseph Crilley (H. 25" x W. 22 ")



Over the Creek, n.d., Paul L. Gruber (H. 24" x W. 29.75")



Frontiersman, n.d., James W. Schucker (H. 24" x W. 30 ")



Coffee and Fruit, n.d., Maximilian (Maxo) Vanka (H. 18" x W. 24")

Collection A consists of six (6) oil paintings by five (5) artists, specifically, Walter Emerson Baum, Joseph Crilley, Paul L. Gruber, James W. Schucker, and Maximilian Vanka. The paintings cover a variety of topics from street scenes to snow-covered fields to abstract teapots and fruit. Students can study perspective, the artist's use of shadow and light, and composition to name a few focus areas. Connections to math, science, social studies, for example, are easily made via the interdisciplinary curriculum.

[Return to contents](#)



Collection B



Allentown Street, n.d., Walter Emerson Baum (H. 24" x W. 30")



The View of Neshaminy at Edison, c. 1935, Sarah Blakeslee (H. 22.5" x W. 30")



Trout Stream, n.d., Joseph Crilley (H. 24" x W. 18")



Abstraction, n.d., Charles Evans (H. 20" x W. 16")



Prairie Guns, 1944, Charles Hargens (H. 19.5" x W. 16.5")



Wycombe at Night, n.d., Harry Leith-Ross (H. 17.75" x W. 36.125")

Collection B consists of six (6) oil paintings by six (6) artists, specifically, Walter Emerson Baum, Sarah Blakeslee, Joseph Crilley, Charles Evans, Charles Hargens, and Harry Leith-Ross. The different paintings represent the different schools of thought that emerged in the New Hope School of Art – impressionism to the abstract. Several of the artists developed an international reputation. A variety of topics from street scenes to farm scenes to western references provide students the opportunity to study different artistic styles and approaches using multiple contexts.

[Return to contents](#)



Collection C



The Hair-Trigger Kid (Home on the Range), 1944,
Charles Hargens (H. 21.25" x W. 12.75")



Still Life with Pleading Figure, n.d.,
Arthur Meltzer (H. 20 x W. 24")



Composition, 1948, Lloyd R. Ney (H. 24" x W. 20")



Springtime in the Catskills, n.d.,
Kenneth Nunamaker (H. 21.5" x W. 23.5")



Bucks County Street Scene, n.d., unknown artist (H. 25" x W. 30")



Buckingham Barn, n.d., Maximilian (Maxo) Vanka
(H. 19.75" x W. 22.75")

Collection C consists of six (6) oil paintings by six (6) artists, specifically, Charles Hargens, Arthur Meltzer, Lloyd R. Ney, Kenneth Nunamaker, Maximilian Vanka, and one unknown artist. Students can study traditional techniques of impressionism but also the techniques of modernism as represented by Lloyd Ney's work. This collection provides a variety of content that can be used to study perspective, the artist's use of shadow and light, and composition to name a few focus areas. Connections to math, science, social studies, for example, are easily made via the interdisciplinary curriculum.

[Return to contents](#)



Collection D



Vase of Flowers, n.d., Walter Emerson Baum (H. 14" x W. 10")



Forbidden Valley, 1955, Charles Hargens (H. 14" x W. 20")



Barn, c. 1955, Joseph Petrilock (H. 16.25" x W. 24.25")



Boone Street, Manayunk, n.d. Francis Speight (H.18" x W. 24")



Winter Afternoon, n.d., Maximilian Vanka (H. 20" x W. 24")



Untitled (Autumn Scene), n.d., Anne Yost (H. 20" x W. 24")

Collection D consists of six (6) oil paintings by six (6) artists, specifically, Walter Emerson Baum, Charles Hargens, Joseph Petrilock, Francis Speight, Maximilian Vanka, and Anne Yost. The collection has a wide variety of topics from florals to Western scenes, to farm scenes to abstracts giving students the opportunity to study multiple approaches to creating a painting and an artist's approach to topic and composition. In addition, topics for social studies, environment studies, geography, cultural and historical studies, descriptive and informational writing as well as math and science (perspective, shadow and light) are easily accessed via the interdisciplinary curriculum.

[Return to contents](#)



Collection E



Snowstorm-Mill and Homestead at the Edge of Springtown, n.d., Walter Emerson Baum



Heirloom, n.d., Helen Gayman (H. 20.125" x W. 28.25")



Cornwall Wharf, England, n.d.,
Walter Elmer Schofield (H. 30" x W. 36")



Rodeo Rider, n.d., James W. Schucker (H. 24" x W. 30")



Lilacs, n.d., Maximilian Vanka (H. 24" x W. 20")



Allentown, 1956, Anne Yost (H. 24" x W. 30")

Collection E consists of six (6) oil paintings by six (6) artists, specifically, Walter Emerson Baum, Helen Gayman, Walter Elmer Schofield, James W. Schucker, and Maximilian Vanka. The collection provides a variety of topics and artistic styles that provide the opportunity for students to learn how different artists approach their work. The topics allow for social studies, geography, science, and language arts connections to name a few.

[Return to contents](#)



Collection F



The Swimming Hole, n.d., George Bentzley (H. 16" x W. 20")



The Willow, n.d., Ben Solowey (H. 15.5" x W. 17.5")



Knight's Farm-Winter, n.d., Arthur Meltzer (H. 20" x W. 24")



Old Movie Theater, 1978, Harry Walker (H. 20" x W. 22")



Jersey Landscape, n.d., Elizabeth Ruggles (H. 15.5" x W. 17.5")



Mixed Mums, 1954, Anne Yost Whitesell (H. 20" x W. 24")

Collection F consists of six (6) oil paintings by six (6) artists, specifically, George Bentzley, Arthur Meltzer, Elizabeth Ruggles, Ben Solowey, Harry Walker, and Anne Yost Whitesell. This collection has several nature-oriented topics and two unrelated topics of still-life florals and the inside of an old movie theater. This collection provides an opportunity to study how artists approach landscape paintings as opposed to still-life paintings. Connections to math, science, social studies, for example, are easily made via the interdisciplinary curriculum.

[Return to contents](#)



Collection G



Winter's First Snow, 1925, Walter Emerson Baum
(H. 30" x W. 36")



Corn Harvest, n.d., George Bentzley (H. 18" x W. 24")



Santa Margherita, 1930, Susan Schneider (H. 18" x W. 24")



We All hang Together, n.d., John Sharp, (H. 24" x 16")



Music by Candlelight, n.d., Anne Yost Whitesell (H. 16"x W. 20")



Nunamaker Farm, n.d., Anne Yost Whitesell (H. 20" x W. 24")

Collection G consists of six (6) oil paintings by five (5) artists, specifically, Walter Emerson Baum, George Bentzley, Susan Schneider, John Sharp, and Anne Yost Whitesell. The themes of the paintings lend themselves to geographical connections of place and culture, ways of life, and seasons as well as language arts topics of symbolism and metaphor.

[Return to contents](#)



Collection H



Winter Street Scene, 1956,
Walter Emerson Baum (H. 16" x W. 20")



Smithtown-Tinicum Canal Locks, n.d.,
June Pfifer Delph (H. 16" x W. 20")



Contour Planting, n.d., Angelica King (H. 20" x W. 24")



Peace of Mind, n.d., Roy Nuse (H. 30" x W. 25")



Trawlers Coaling, Boulogne, n.d.,
Walter Elmer Schofield (framed: H. 46" x 56")



The Cuttalossa, n.d., William Francis Taylor (H. 20" x W. 24")

Collection H consists of six (6) oil paintings by six (6) artists, specifically, Walter Emerson Baum, June Pfifer Delph, Angelica King, Roy Nuse, Walter Elmer Schofield, and William Francis Taylor. This Collection gives students the opportunity to study multiple approaches to creating a painting and an artist's approach to topic and composition. In addition, topics for social studies, environment studies, geography, cultural and historical studies, descriptive and informational writing as well as math and science (perspective, shadow and light) are easily accessed via the interdisciplinary curriculum.

[Return to contents](#)



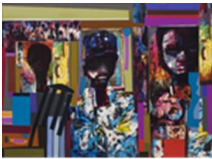
Collection I



The Journey, c. 1990, Selma Bortner (H. 24" x W. 36")



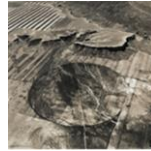
Early Light, 1984, Vincent Ceglia (H. 21" x W. 29")



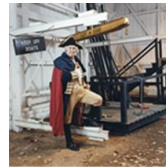
Orpheus I, 1997, Paul Keene (H. 24" x W. 29.5")



Jazz Series #4, Chicago Blues, 1983, Paul Keene (H. 22" x W. 29.5")



The Buffalo Jump Called Chugwater and an Irrigation Pivot near Wheatland, Wyoming, 1991, Emmet Gowin



James Gallagher as George Washington, 1992, David Graham (H. 19" x W. 18.5")

Collection I consists of six (6) pieces by five (5) artists, specifically, Selma Bortner, Vincent Ceglia, Paul Keene, Emmet Gowin, and David Graham. This collection is the first AOTM collection that features contemporary pieces that were acquired since 2005. The collection includes collage, mixed media, prints, pencil drawing, and photographs. Students will be able to analyze contemporary and modern art as well as the differences in the multiple mediums used. Using language arts standards, students will be able to study the approach to art through various themes including humor, fantasy, and surrealism.

[Return to contents](#)



Collection J



Zee Lover Boy, 2010,
Stacie Speer Scott (H. 35 3/4" x W. 47 1/2")



Pink Water Ring, 2011,
Gwendolyn Kerber (H. 35 3/4" x W. 47 1/2")



Water Ring, 2011, Gwendolyn Kerber (H. 23 1/2" x W. 32")



Chigi, n.d., Robert G. Dodge (H. 36" x W. 58")



Distant Light, n.d., Annelies Van Dommelen (H. 32" x W. 40")



Barn Silo, n.d., Bruce Katsiff (H. 20 1/4" x W. 16 1/4")

Collection J consists of seven (7) pieces by six (6) artists, specifically, Stacie Speer Scott, Gwendolyn Kerber, Robert G. Dodge, Annelies Van Dommelen, and Bruce Katsiff. The collection, as does Collection I, consists of contemporary acquisitions of the Art Collection and includes oil paintings, collage, mixed media, and a photograph.

[Return to contents](#)



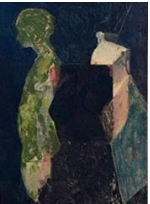
Collection K



Moods Covered Bridge, c. 1960,
George Bentzley (H. 22 7/8" x W. 26 3/4")



Brewster Inlet, Cape Cod, 1949,
Ranulph Bye (H. 14.5" x W. 21.5")



Androgynous, n.d., Alan Goldstein (H. 51 7/8" x W. 40 1/4")



Rooftops, c. 2010, Bruce Katsiff (H. 16" x W. 20")



Ross Office, c. 1970, Katherine Steele Renninger
(H. 16" x W. 23.75")



East Gloucester Harbor, Massachusetts, c. 1959,
Melville F. Stark (framed: H. 35" x W. 30")

Collection K consists of six (6) pieces by six (6) artists, specifically George Bentzley, Ranulph Bye, Alan Goldstein, Bruce Katsiff, Katherine Renninger, and Melville F. Stark. The Collection includes work by both contemporary and first half of the 20th Century artists. These pieces were selected to support the curricular connection to STEAM (Science, Technology, Engineering, Art, and Mathematics).

[Return to contents](#)